



Website: www.allianceexploreflooring.ie

Telephone: + 353 1 861 2962

Address: Unit 8, Primeside
Business Park
Ballycoolin,
Dublin 15

Alliance

/ə'laɪ.əns/

noun

A union or association formed for mutual benefit, especially between countries or organisations.

What we do

We supply and fit 3,500,000 sq. ft of flooring per annum. The Alliance team gives designers and architects the scope to bring their vision to life with a range of functional flooring that meets the requirements of even the most creative style. Clients and design teams have come to associate Alliance with reliability and added value - support, knowledge, and verifiable sustainability.

Why choose us?

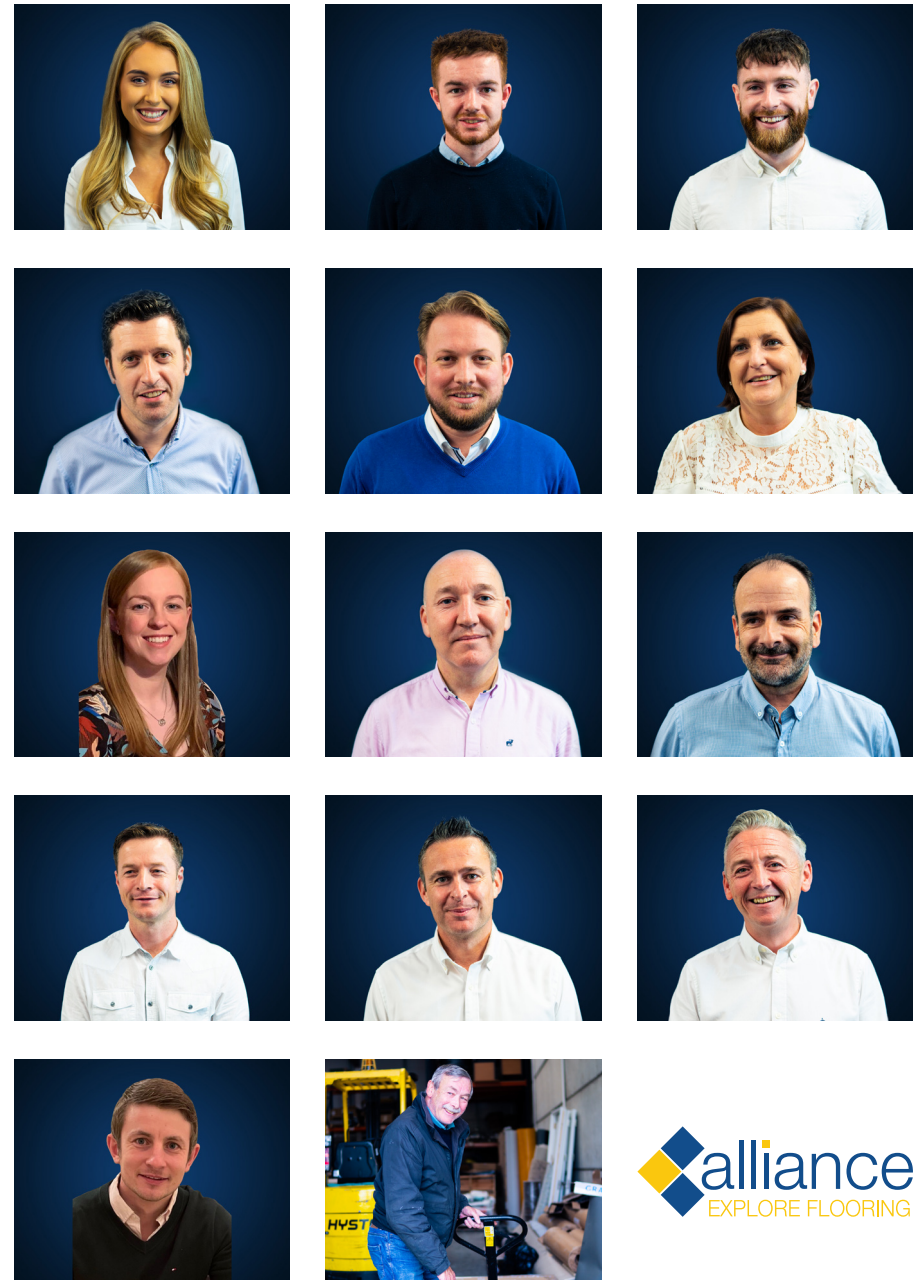
Achieving 'mutual benefit' is our mission - to help you to realise your vision through the use of quality materials, workmanship and delivery, Broadloom carpet, carpet tiles, vinyl, rubber, wood, ceramics, stone, sports floors, and tiling are among the myriad options from which you can choose to bring life to your project.

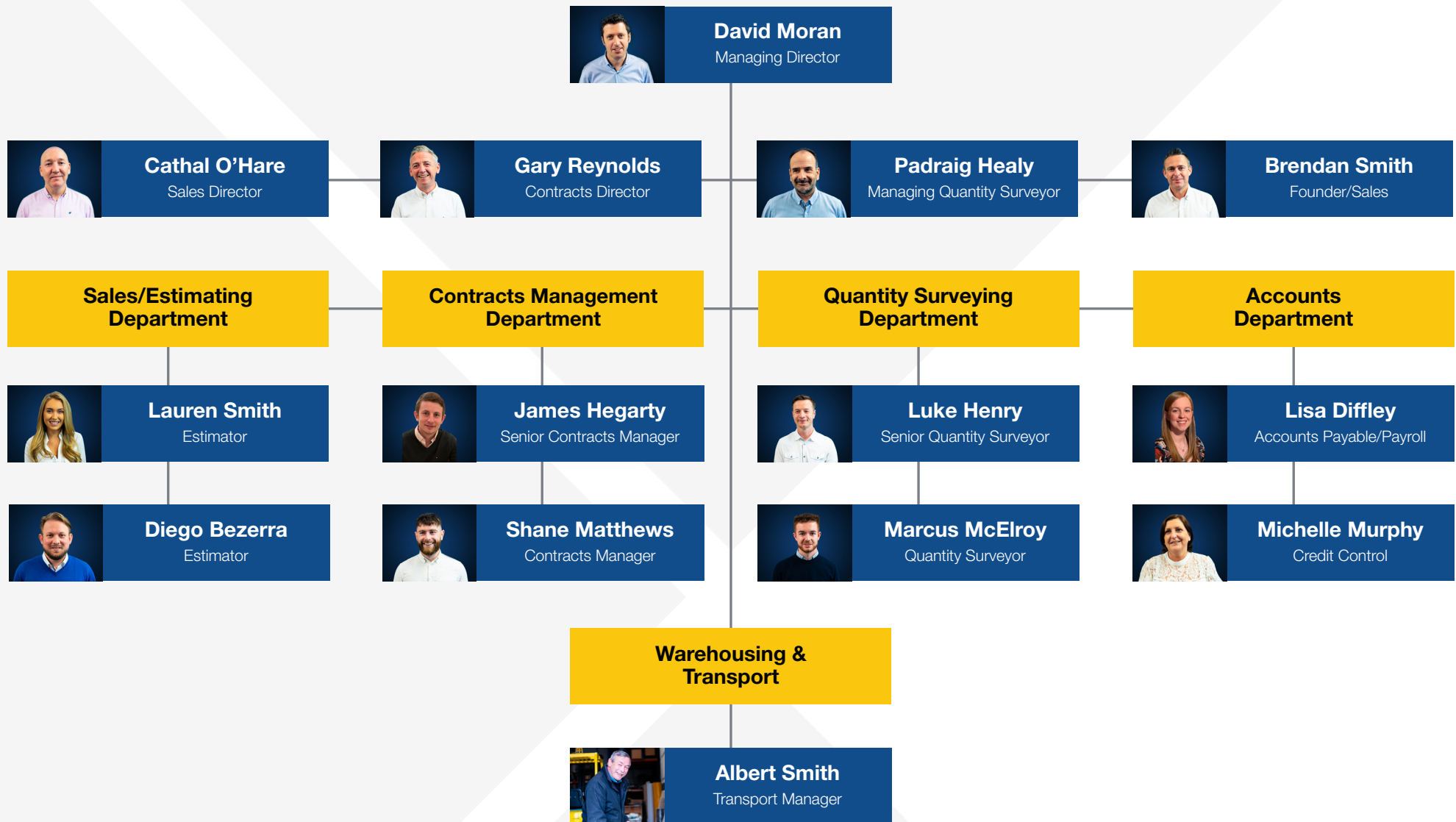
But it's not enough to provide an almost limitless range of options for designers, architects and end-users, the vision must be delivered in compliance with the contractors' programmes of works, and the end result must be of a quality that will sustain for decades. The Alliance team does this by bringing 150 years experience to the project in parallel with product from the largest floor covering suppliers in the world. Flooring is in our DNA. Explore flooring with us.

Award Winning Team!

The Fit Out Awards is judged by a jury of our peers, and in their wisdom they have selected Alliance as the winner of the Subcontractor of the Year. This is a great team achievement for us as a commercial flooring contractor and recognises our team's enhanced capacity to deliver our clients' vision. The definition of the word Alliance is 'a union or association formed for mutual benefit' and this award is testament to the dedication of our people and the alliances they have formed. Fast track fit out projects bring challenges that our teams and clients overcome together - stronger for forming an Alliance.

Congratulations to every single Alliance team member, the professional teams and contractors with whom we work, and the people who enjoy the flooring we create - this is a team win.





Alliance was established in 2014 and has grown to comprise a team of 25 staff and an installation team of 154 people.

Our Installation Team

Carpet Fitters

38

Vinyl Layers

42

Tilers

39

Wooden Floor Layer

21

General Operations

14

€0m

€2m

€4m

€6m

€8m

€10m

€12m

2021 - 25 employees

2020 - 23 employees

2019 - 20 employees

2018 - 14 employees

2017 - 10 employees

2016 - 10 employees

Hardwood

The Alliance team have been involved in all types of hardwood flooring contracts throughout Ireland, Holland, Germany and the UK as well as marine contracts worldwide. We pride ourselves in offering high quality flooring on time and within budget.

We have unrivalled experience in:

- Sports Flooring Systems
- Sports Court Markings
- Wide Plank Flooring
- Parquet Flooring
- Reclaimed Flooring
- Refurbishment
- Maintenance

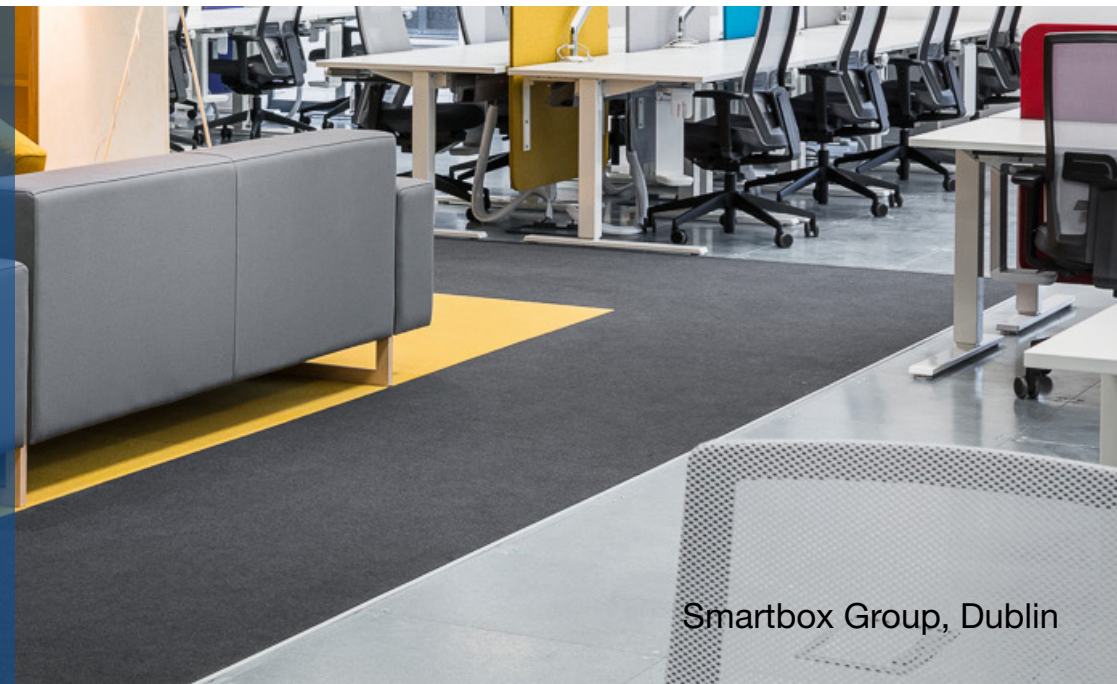


Iconic Offices, Dublin

Carpet

At Alliance, we understand the importance of offering the complete flooring solution. Carpet forms a very important part of our flooring business. We offer high quality products, on time and within budget. We have a nationwide team of installers available to install, service and maintain flooring throughout Ireland, Holland, Germany and the UK.

We work closely with all the major carpet manufacturers thus allowing us to be able to offer competitive prices along with excellent technical advice.



Smartbox Group, Dublin

Tiling

Our tiling team have many years experience in delivering high quality projects on time and within budget to many major retailers, hotels, leisure facilities and offices throughout Ireland, Holland, Germany and the UK.

Alliance delivers a complete design and installation service for commercial tiling projects. Our team can provide the best guidance and technical advice when deciding a design for tiles.

We work closely with the major tiling manufacturers and distributors, allowing us to be able to offer competitive prices along with excellent technical advice.



Avoca, Dublin

Vinyl & Rubber

Vinyl & rubber are popular choices for many customers who need a solution for extensive public areas. It provides a cost-effective solution in areas of heavy traffic where daily cleaning and upkeep is essential. The Alliance team of experts can source and install vinyl products to meet all circumstances.

Alliance has a specialist team of vinyl specifiers and installers working closely with architects, designers and builders throughout Ireland, Holland, Germany and the UK. Due to our relationship with vinyl manufacturers and suppliers we can offer affordable options that offer style, durability, and long-lasting performance. At Alliance we are very aware of the importance of expert floor preparation before the installation of any vinyl flooring. As with carpet, vinyl offer many styles and colours.



Havas, Dublin



Augmented Resource

As our alliances and track record with long-standing clients result in more projects onsite we are also augmenting our most valued resource - our people! Our team brings years of experience, information which will help to nurture new and existing opportunities along the customer journey, with an improved efficiency and process. In fast track fit out projects clients want certainty around time and cost, they want quality, beauty and functionality. As Alliance steadily grows its order book, our people have more opportunities to play to their strengths while acquiring new skills. The Alliance team ensures projects reach their milestones through effective communication, planning and technical knowhow.

Sustainability

We supply and fit 3,500,000 sq. ft of flooring per annum. During the last twelve months we have developed our Environmental and Social Governance policy to extend to our supply chain. We are working with manufacturers such as Interface, Tarkett and Ege who have robust sustainability targets. We are recycling 30% of the old floors we lift. We are also upcycling floors that are in good condition and they are being re-used in charity premises. We have provided the floors for the Tiglin Centre in Wicklow which helps people caught in a cycle of addiction and homelessness to regain their mental and physical health.

We are working hard with our largest vinyl supplier, Tarkett to get clients on board with their 'Cradle to Cradle' recycling scheme.

- ◆ We provide FSC-certified solid wood
- ◆ Our ranges use low-VOC finishes and sealants
- ◆ We install without glue; we use nail-down or click-lock, reducing chemical offgassing
- ◆ We offer NAF-certified products



Innovation

Reduced solvents

Alliance is the first floor supplier in Ireland able to boast an entirely solvent-free production process, having initiated our own environmental programme long before this becomes general practice.

Environmental

Waste products from forest felling provide district heating for the community around the production factory. The ash that remains is returned to the forest as fertiliser.

BIM

We offer BIM objects for most of our hardwood floors to help architects, designers, engineers and the specifying community to plan and visualize their projects in an easy and effective way.





Closing the Loop

We help you to manage your flooring waste while contributing to safeguard the world's natural resources and protecting the environment. We turn flooring waste and secondary materials into high-quality new products.

We are closing the loop and shifting to a circular economy.

How do we take material back?

Post Installation Off-cuts:

- Bulk bags are supplied to the flooring contractor.
- Bags are kept securely on site.
- Installers fill the bag with waste from the days' installations.
- Contractor advises Tarkett that bag(s) are ready for collection.
- Tarkett Customer Services arrange collection, usually within 3-5 working days.



2020 TARGET

50% of all our carpets are produced with yarn from recycled or renewable materials.

All internal waste is sorted accordingly.

2025 TARGET

75% of all our carpets are produced with yarn from recycled or renewable materials.

All production waste is reused, recycled or composted.

2030 TARGET

All our carpets are produced with yarn from recycled or renewable materials.

All waste is reused, recycled or composted.

FROM WASTE TO RESOURCE

All our carpets are produced with yarn from recycled or renewable materials.

All our waste is reused, recycled or composted.

SUSTAINABLE CARPETS

All our carpets are Cradle to Cradle Certified™ at Platinum level.

75% of all the raw materials we use are recycled.

NET CARBON POSITIVE

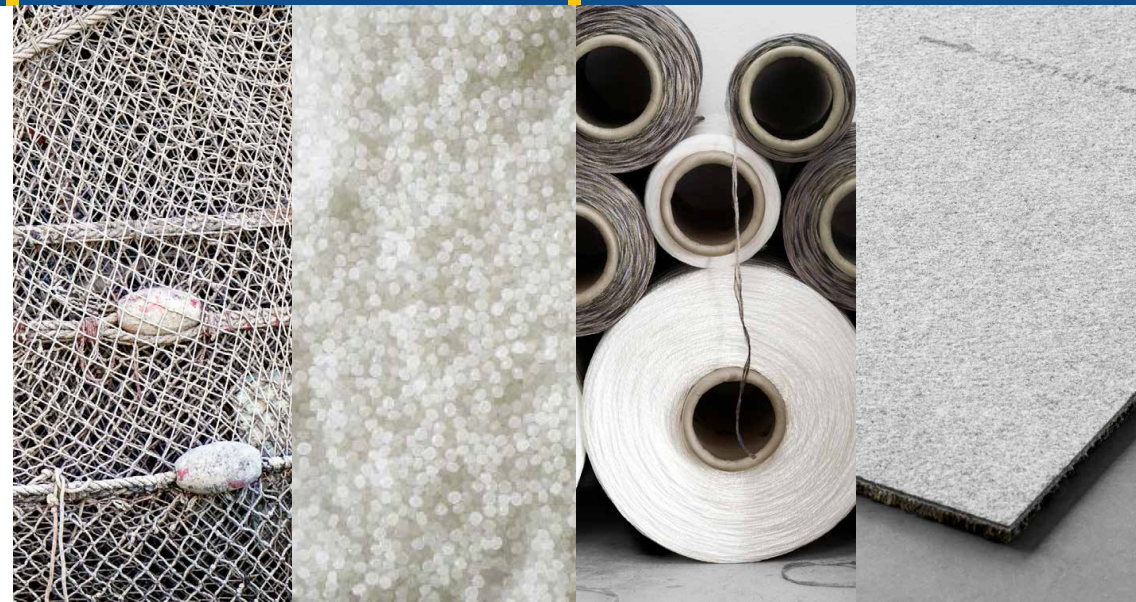
We are a net positive producer of green energy.

All our road, rail, sea and air transport are carbon neutral.

CLOSING THE LOOP

A sellback system for used carpets is established.

All our carpets are recyclable, reusable or compostable.



Our Services

- ◆ Project Design and Specification
- ◆ Product Procurement
- ◆ Project Surveys
- ◆ Project Management
- ◆ Fitting and Installation
- ◆ Carpet Replacement in Live Offices
- ◆ Floor preparations including surveys & all associated works



AirBnB Reflector Building

- ◆ 45,000 sq. ft. Internal Office Fitout
- ◆ 24 Week Programme
- ◆ Blue form of contract
- ◆ Major Structural Works
- ◆ Dust & Noise constraints



Havas, Dublin

- ◆ 30,000 sq. ft. Internal Office Fitout
- ◆ Open plan workspaces
- ◆ Glazed partitions
- ◆ New floor finishes and specialist joinery
- ◆ New meeting rooms



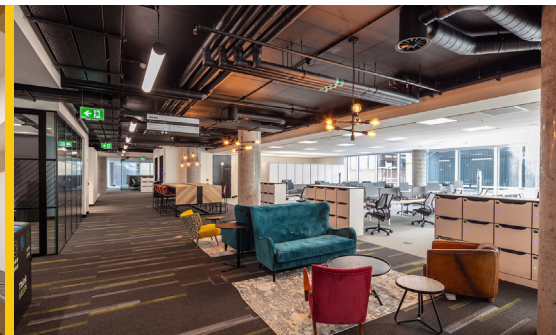
Udemy, 2 Windmill Lane

- ◆ 14,500 sq. ft. Internal Office Fitout
- ◆ 16 Week Programme
- ◆ Blue form of Contract
- ◆ Live Building
- ◆ Mixture of Cellular & Open Plan



Eden One Gym

- ◆ 40,500 sq. ft. Gym Fitout
- ◆ 21 Week Programme
- ◆ Traditional contract
- ◆ Dust & Noise constraints
- ◆ Mixture of Cellular & Open Plan



Deloitte, 3 Park Place

- ◆ 30,560 sq. ft. Internal Office Fitout
- ◆ Open plan workspaces
- ◆ Mixture of Cellular & Open Plan
- ◆ Creative breakout spaces
- ◆ New meeting rooms



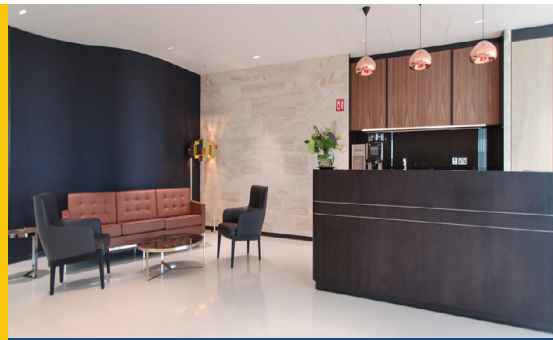
Hubspot, Dublin

- ◆ 16,500 sq. ft. Internal Office Fit Out
- ◆ 12 Week Programme
- ◆ Creative breakout spaces
- ◆ Large collaboration spaces with nature themes
- ◆ Spacious living rooms



New Bancroft, Dublin

- ◆ 250 rental apartments
- ◆ 8mm laminate flooring
- ◆ Dantec and Lano Broadloom throughout the common areas



Aercap

- ◆ 70,000 sq. ft. Internal Office Fitout
- ◆ 4 Floors + Executive Floor
- ◆ LEED Platinum
- ◆ Full Mechanical and Electrical services



Oracle, Dublin

- ◆ 85,000 Sq. ft. Internal Office Fit Out
- ◆ 28 Week Programme
- ◆ Strip out of two existing buildings, over 3 floors and combine into one
- ◆ LEED Platinum

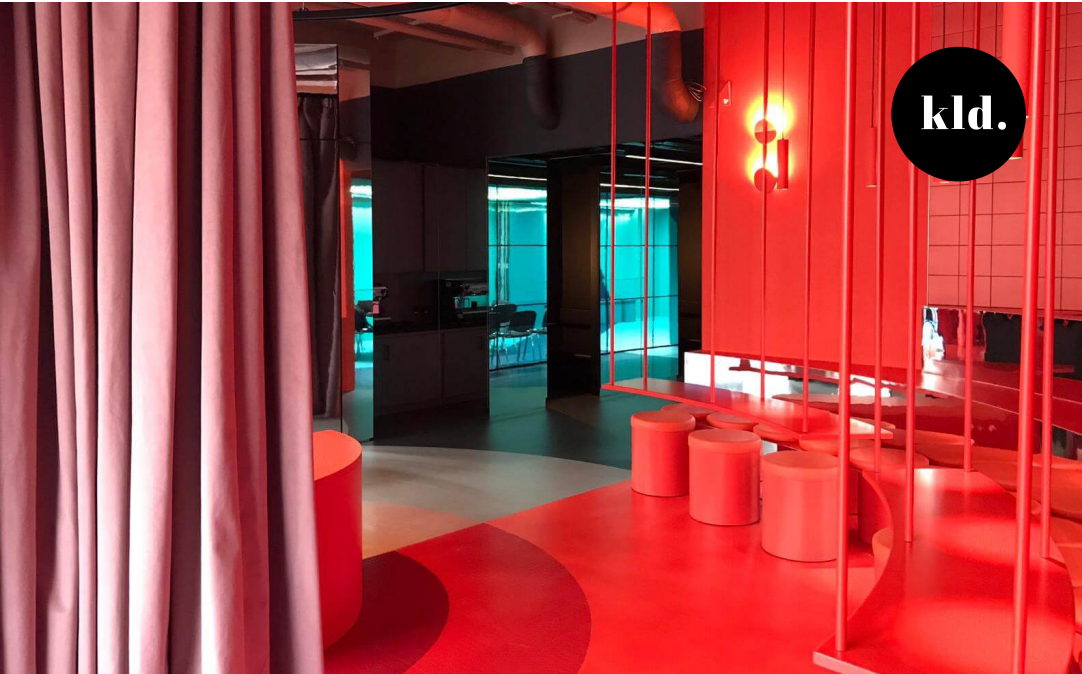


Bristol-Myers Squibb

- ◆ 20,000 sq. ft. Internal Office Fitout
- ◆ 16 Week Programme
- ◆ Fully occupied throughout
- ◆ Soft, hard and resin flooring
- ◆ Clean room laboratories

A partnering approach





“Quality and seamless delivery”

KLD had a vision for the Havas Village in Cuffe Street where the mood and function of the various spaces was delineated by the floors. We continued the flooring up the walls in some areas, we were impressed with the level of detail Alliance brought to the project, the quality and seamless delivery and coordination with the onsite team really made an intricate job a true success.

- Roisin Lafferty, KLD

“Can-do attitude and flexible approach”

Following a long history of performance and delivery from the team at Alliance, once again they have delivered for mac Interiors within difficult programme constraints, they did this with a can-do attitude, a flexible approach and all with the quality that we demand. mac-interiors is built on a foundation of good relationships with clients and sub-contractors alike. We look forward to completing current and future work with Alliance.

- David Caulfield, Project Director, Townlink





“Pro-active in dealing with any situation”

We have worked with Alliance Carpets on numerous projects in the last decade. They offer an extremely efficient service from advising on all aspects of product specification and technical assistance to on site installations and maintenance.

From initial stage of the project through to the end, their professionalism and excellent workmanship shines right through. They have the foresight within planning and project management to ensure that the works were completed on time. Their installers are well versed in working within a live environment and their standard of work is testament to their professionalism. We found Alliance Carpets to be pro-active in dealing with any situation that occurred on site.

- Dave Merriman, T&I Fitouts

“Consistently offered a quality service”

We have worked for a number of years with the management team now working for Alliance on such major projects as the Convention Centre Dublin, PwC and E&Y. They have consistently offered a quality service on each of their projects. The flooring trade needs to be very flexible and they have always delivered a collaborative approach to achieve ours and our clients expectations and we look forward to working with them in the future.

- Donal McCarthy, Managing Director, SISK



2017



Central Bank of Ireland
Large Office of the Year

2018



RCSI
Project of the Year

2019



Autodesk
Project of the Year

2020



DocuSign
Project of the Year



2017



Slack EU HQ
Medium Office of the Year

2018



Avolon
Large Office of the Year

2019



Avoca Ballsbridge
Retail Project of the Year

2020



HubSpot
International Project of the Year

MAC Interiors	Bristol Myers Squibb Pharmaceutical	€1,985,000
MAC Interiors	Oracle - BLOCK A,B, C	€1,305,000
Sonica Fit Out	Hubspot - All Buildings 2017-2019	€1,205,000
Glasgiveness	Maynooth University Campus	€993,000
Structuretone	Amazon	€953,000
Structuretone	Workday - 2016 to 2018	€827,000
DHD	Beaumont Lodge Nursing Home	€709,000
Felix O Hare	Dublin City University	€673,000
MAC Interiors	NTMA	€580,000
Sonica Fit Out	Bank of America	€575,000
Structuretone	Symantec	€518,000
MAC Interiors	KPMG HQ Dublin	€507,000
Ganson	Carechoice Nursing Homes	€502,000
John Paul Construction	DCC/Staycity, Townsend Street	€488,000
Structuretone	Avalon	€454,000
MAC Interiors	DocuSign	€454,000
McNamara	Hampton by Hilton, River House, Dublin	€450,000
Tracey Brothers	St Patricks Dungannon	€449,000
Glasgiveness Construction	Kingswood School, Tallaght	€400,000
Monami	Lough Shinnny Nursing Home	€397,000
Ganson	Naas Community College	€385,000
Structuretone	Indeed	€384,000
Walls Construction	Zendesk	€384,000
Stewarts	Wesley College Dublin	€362,000
Ganson	Stewarts School, Lucan	€350,000
Glasgiveness Construction	Lusk School	€343,000
SISK	Baggot Street - Bank Of Ireland	€318,000
T & I Fit Outs	Accenture	€311,000
MAC Interiors	Northern Trust Bank	€307,000
Collen Construction	AMGEN NGO	€465,000
MAC Interiors	UHG Letterkenny	€289,000
Stewarts	Dublin Airport Central	€288,000
Clancy	Marymount Care Centre	€260,000
Ardmac	Eli Lilly	€255,000

Park Developments	New Bancroft Tallaght - 250no Apartments	€253,000
Structuretone	Microsoft	€245,000
MAC Interiors	Aercap Fit-Out	€242,000
Structuretone	CRH Fit-Out	€233,000
Glenbrier	No 1 Ballsbridge	€231,000
T & I Fit Outs	Axa Insurance	€225,000
IRES REIT	Hansfield - 100no 3&4 Bed Homes	€221,000
Newline Homes	Alanna Homes Direct Hansfield	€211,000
Buckingham Group	National Indoor Arena	€210,000
Ganson	Ryevale	€205,000
MAC Interiors	Ernst & Young	€205,000
Walls Construction	Google Eastpoint-Freeman House & Block P	€200,000
Structuretone	JP Morgan	€196,000
MAC Interiors	Price Waterhouse Cooper	€188,000
Sonica Fit-Out	Huawei	€183,000
Stewarts	The Goethe Institute	€183,000
Structuretone	Temple Bar Hotel	€179,000
T & I Fit Outs	Blackthorn Google Office Fit-Out	€178,000
MAC Interiors	Royal College of Surgeons	€173,000
The Interiors Group	Citrix Eastpoint	€173,000
Trinity Collection	Twinliffe	€172,000
BAM Construction	Tyco Albert Quay	€171,000
MAC Interiors	RyanAir HQ, Swords	€170,000
MAC Interiors	Informatica Fit-Out	€167,000
MAC Interiors	Autodesk - Phase 1 & 2	€266,000
MAC Interiors	Atrium Building	€154,000
T & I Fit Outs	Left Field/ Stripe	€154,000
Glasgiveness Construction	St Mochtas	€152,000
MAC Interiors	IPC House	€150,000
Ganson	St Olivers Malahide	€149,000
Ganson	The Galleries Donabate	€147,000
MAC Interiors	Barclays	€145,000
T & I Fit Outs	Iconic	€144,000



Henry J Lyons

